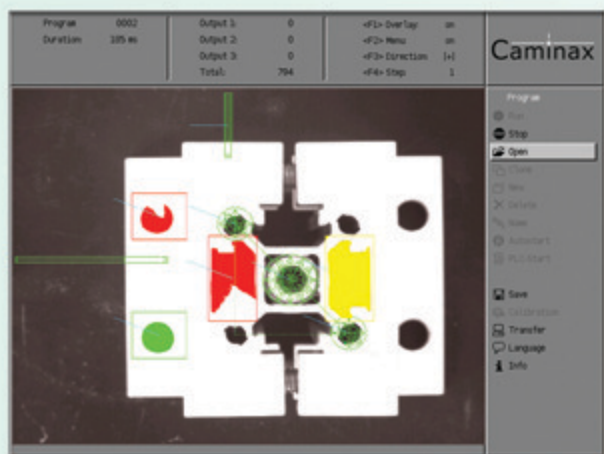


# Caminox®

## All the Advantages of a Smart Camera Vision-System – Now Even Easier to Operate –

Caminox® is a full vision system based on one of the world's fastest intelligent cameras:

- PC-independent, with own processor featuring 1200, 3200 or 8000 MIPS (comparable to a 7.2 GHz Pentium)
- Up to 100 programs storable
- Multi-color overlay
- Flexible output signal configuration
- 10 measurements per second (typical), even with complex evaluations
- Color capability available



Caminox® is the successor of CAMAT®, adopted to the latest standards. Both vision systems are deployed for automation and inspection tasks worldwide.

Typical inspected products are LEDs, packaging or labels. In general any products on assembly lines are easily inspected with Caminox®. Please inquire for your solution!

Typical inspection tasks for Caminox® are:

- Position and alignment
- Brightness and color
- Completeness and integrity
- Type discrimination
- Counting
- Surface
- Pre- and post-assembly inspection



Caminox® special feature is the easy to operate user interface:

- Easy handling with keypad
- Usability optimized menus
- 8 languages (switchable)
- Multi-ROI-Manager handles up to 150 regions of interest (ROI) per module
- Color highlighting of ROI
- Colorized result display
- Runtime-editing of programs



# Caminax®

## Technical Data

Type	612 S	812 C	632	680	1032	1080
<b>Processor (MIPS)</b>	1200		3200	8000	3200	8000
<b>Sensor</b>	1/3"-Sony-CCD 640x480 grayscale	1/2"-Sony-CCD 782x582 color	1/3"-Sony CCD 640x480 1024x768 grayscale			
<b>Image Size</b>	588x476 pixels		636x480 pixels		952x768 pixels	
<b>Image Acquisition</b>	25 Hz	45 Hz	63 Hz		20 Hz	
<b>Digital I/O's</b>	4 IN / 4 OUT					
<b>Interface</b>	Keypad, RS232		Keypad, 100 Mbit Ethernet			
<b>Video Output</b>	SVGA 800x600				SXGA 1280x1024	
<b>Power supply</b>	24 V DC					
<b>Program Selection</b>	RS232 PLC		Ethernet PLC			
<b>Modules</b>	<i>Image</i> [Multiple acquisition, storing, loading,...] <i>Brightness</i> [Average gray value over one or more ROIs, brightness offset, ...] <i>Tracking</i> [Edge based tracking in x and y] <i>Area</i> [Pixel counting over one or more ROIs, center of gravity,...] <i>Result</i> [Definition of digital output depending on module results, delay;...] <i>Point</i> [Edge detection, edge counting on lines and on circle, ...] <i>Vector</i> [Distance between points, center points of vectors and circles, angle, tracking based on center points,...] <i>Circle</i> [Circle fit with flexible node selection, center, excentricity, tracking,...] <i>Color</i> (Caminax 812 C) <i>Angle, Delay, Line...</i>					
<b>Features</b>	Runtime-Editing of programs Multi-ROI-Manager Transfer (Image, Configuration) Calibration Statistics (for each program) Up to 100 programs storable, depending on their size					

## Detailed Information

For more information on Caminax® and related systems or products, please visit our website [www.caminax.com](http://www.caminax.com) and do not hesitate to contact us directly by mail or phone.

Caminax® is developed and maintained by FiberVision. FiberVision is one of Germany's most innovative machine vision companies. FiberVision was founded in 1995 in Aachen – Germany's top region for technology, research and development.

FiberVision is specialized in the development and integration of custom turnkey-solutions worldwide with many customers from the automobile, glass and paper industry.

FiberVision develops products and components for automation and machine vision – based on a broad industrial experience. Caminax is FiberVision's latest product.

www.fibervision.de/en/

**FIBERVISION**

Distributed by:

Caminax® and CAMAT® are registered trademarks of their respective owners